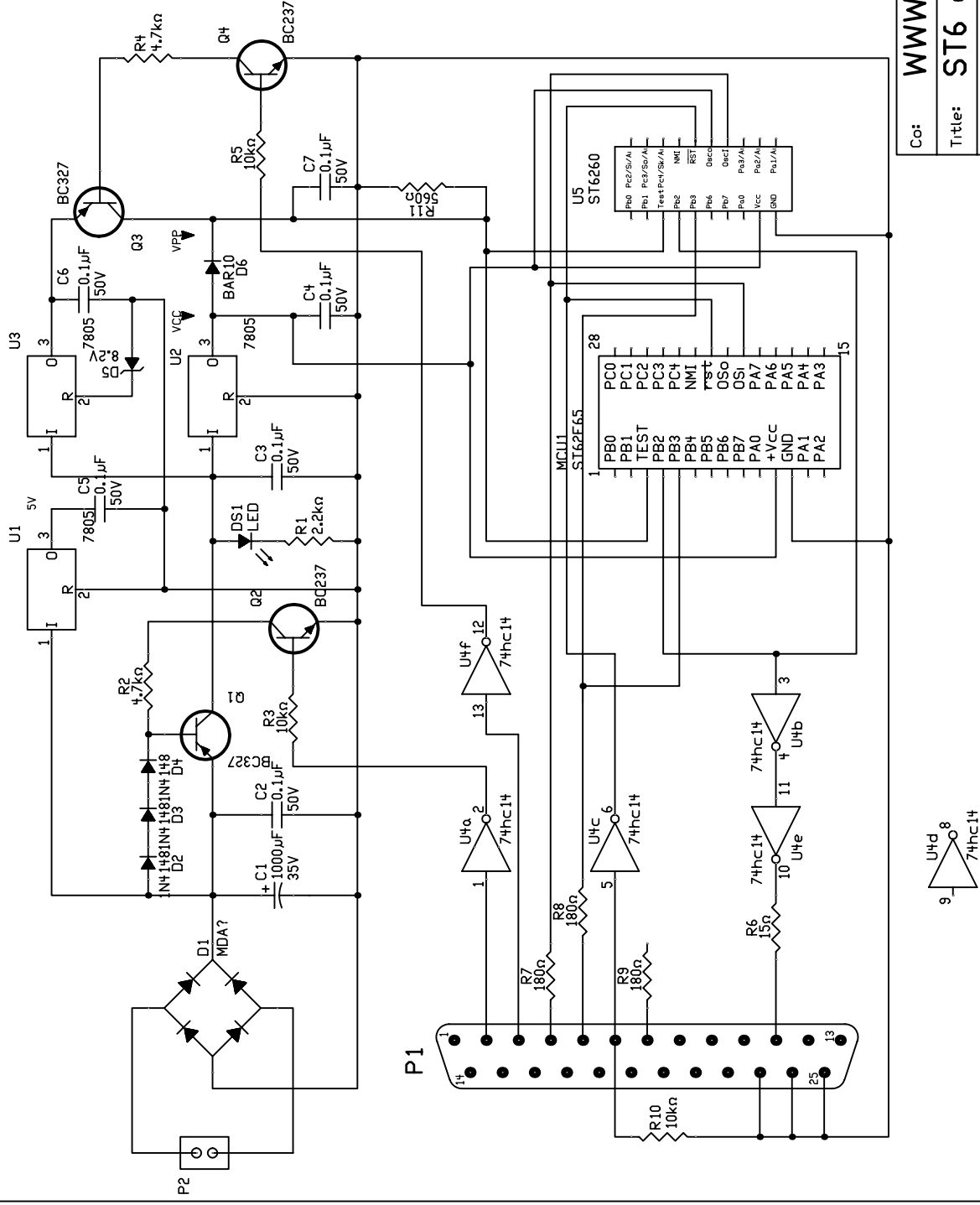


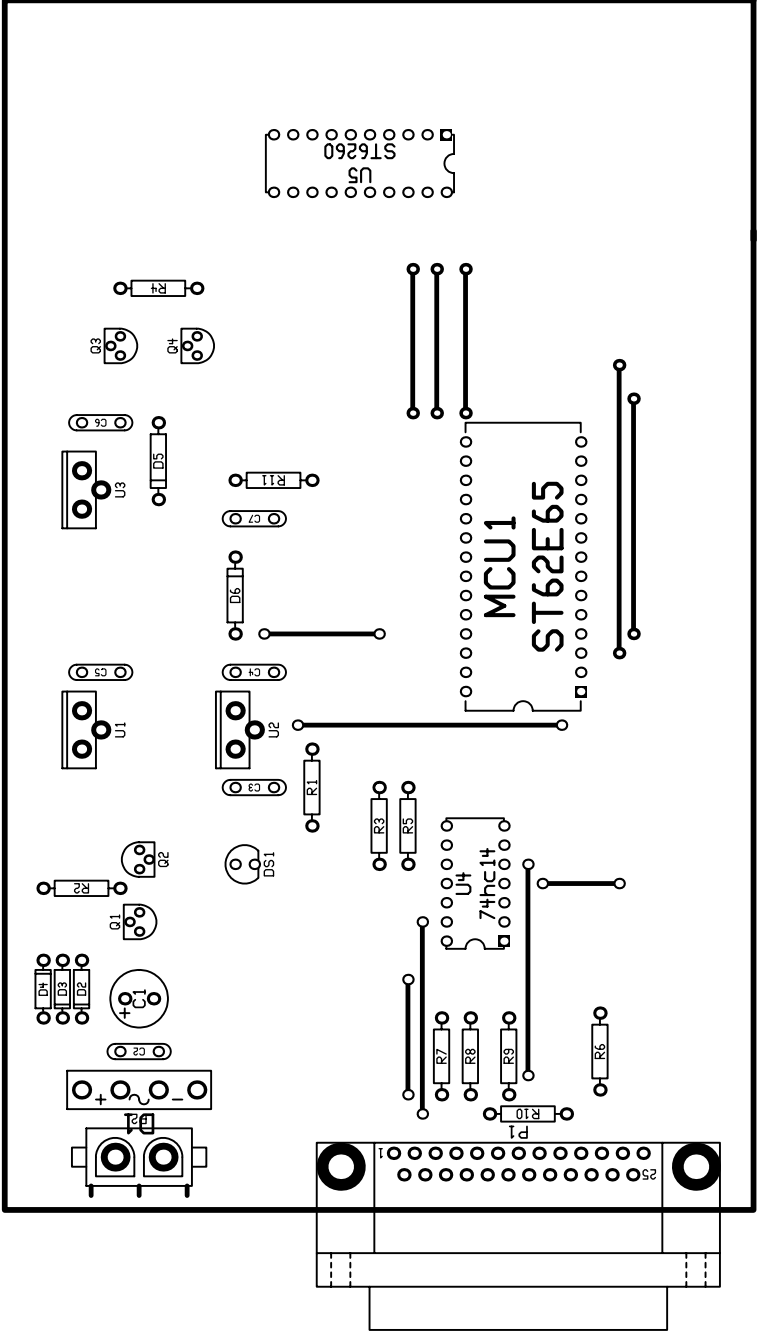
PROGRAMMATORE PER ST6260 E ST6265

Versioni B & C

BILL OF MATERIALS -----									
TYPE/VALUE	MODIFIER	PATTERN	QTY	COMPONENT	REFERENCE	IDENTIFICATION			
0.1µF MKT	50V min	CV	6	C2	C3	C4	C5	C6	C7
1000µF	35V min	CP	1	C1					
1N4148		D'	3	D2	D3	D4			
8.2V 1/2W Zener diode		Z	1	D5					
BAR10 (shottky >30mA)		D'	1	D6					
LED	led rosso	LED	1	DS1					
MDA1	Ponte raddrizz.1A	DB	1	D1					
ST62E65	(ZIF 28 PIN)	ST62E65	1	MCU1	(zoccolo programmazione)				
		powconn	1	P2					
D-shell maschio	25pin DB	DB25	1	P1					
BC237		NPN	2	Q2	Q4				
BC327		PNP	2	Q1	Q3				
15 ohm	1/4w	R'	1	R6					
180 ohm	1/4w	R'	3	R7	R8	R9			
560 ohm	1/4w	R'	1	R11					
2.2 kohm	1/4w	R	1	R1					
4.7 kohm	1/4w	R'	2	R2	R4				
10 kohm	1/4w	R'	3	R3	R5	R10			
74hc14		74hc14a	6	U4a	U4b	U4c	U4d	U4e	U4f
7805	anche versione L	7805	3	U1	U2	U3			
ST6260	(ZIF 20 PIN)	ST6260	1	U5	(zoccolo programmazione)				



Co:	WWW.MUHA.IT
Title:	ST6 eeprom
Board:	eepromer.pcb
Author:	R.MUHA
Date:	10/2001
Revision:	A
Size:	A
Sheet	1 of 1



Drill tape data			
Tool Code	Hole Size	Sym bol	Hole Count

Board type: FR4
Board thickness: .062"
Copper weight: 2oz
All dimensions are in inches.
Board should have green solder mask over bare copper (SMDBC) with white silk screening on top.
View is from the top side of the board.

Co:	?
Title:	?
Board:	?
Drawn:	?
Date:	?
Revision: A	
Size: A	
Sheet 1 of 1	

